

BS01 Stavex

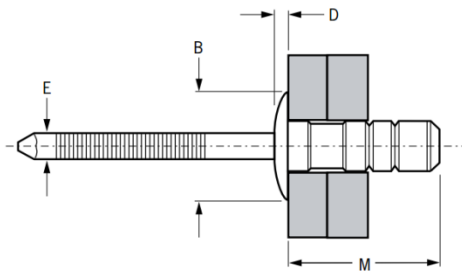
Dome head · Steel body · Steel stem · Multi-grip
3.2 mm (1/8") - 6.4 mm (1/4")

Features

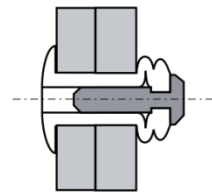
- High shear and tensile strength provides strong, vibration resistant joints
- Multi-grip capability accommodates wide variations in material thickness
- Good hole fill compensates for irregular, oversized, slotted or misaligned holes and can stop movement in non-standard holes
- Retained stem avoids damage, electrical problems or rattling caused by loose stems
- Provides a large blind side bearing area against the rear sheet
- Spreads the tail bearing load/clamp load on the rear sheet making it ideal for use in thin sheet materials

Material

- Body: Low carbon steel, zinc plated
- Stem: Low carbon steel, zinc plated



Before Placement



After Placement

Part No.	Size ø	Grip Range		Hole Size		M max.	øB max.	D max.	øE max.	Shear (min.) kN	Tension (min.) kN
		min.	max.	min.	max.						
0BS01-00414	3.2 (1/8")	1.0	6.0	3.3	3.4	14.5	7.3	1.0	2.2	0.90	1.17
0BS01-00516	4.0 (5/32")	2.0	8.0	4.1	4.2	16.0	8.2	1.4	2.9	1.53	1.80
0BS01-00612	4.8 (3/16")	1.5	5.1	4.9	5.0	12.2	10.1	1.6	3.1	2.60	2.88
0BS01-00614		1.5	6.3			13.8					
0BS01-00618		1.5	9.0			17.1					
0BS01-00622		6.3	12.7			20.1					
01610-04844	6.4 (1/4")	1.5	7.6	6.6	6.9	16.8	13.5	2.7	4.0	3.11	3.56



Can't find what you are looking for?

We can provide customized finishing and colouring.
Contact your nearest [Gripwell](#) team for assistance!